



INDOFINE Chemical Company, Inc.

121 Stryker Lane, Bldg. 30, Suite 1 • Hillsborough, NJ 08844 • U.S.A.

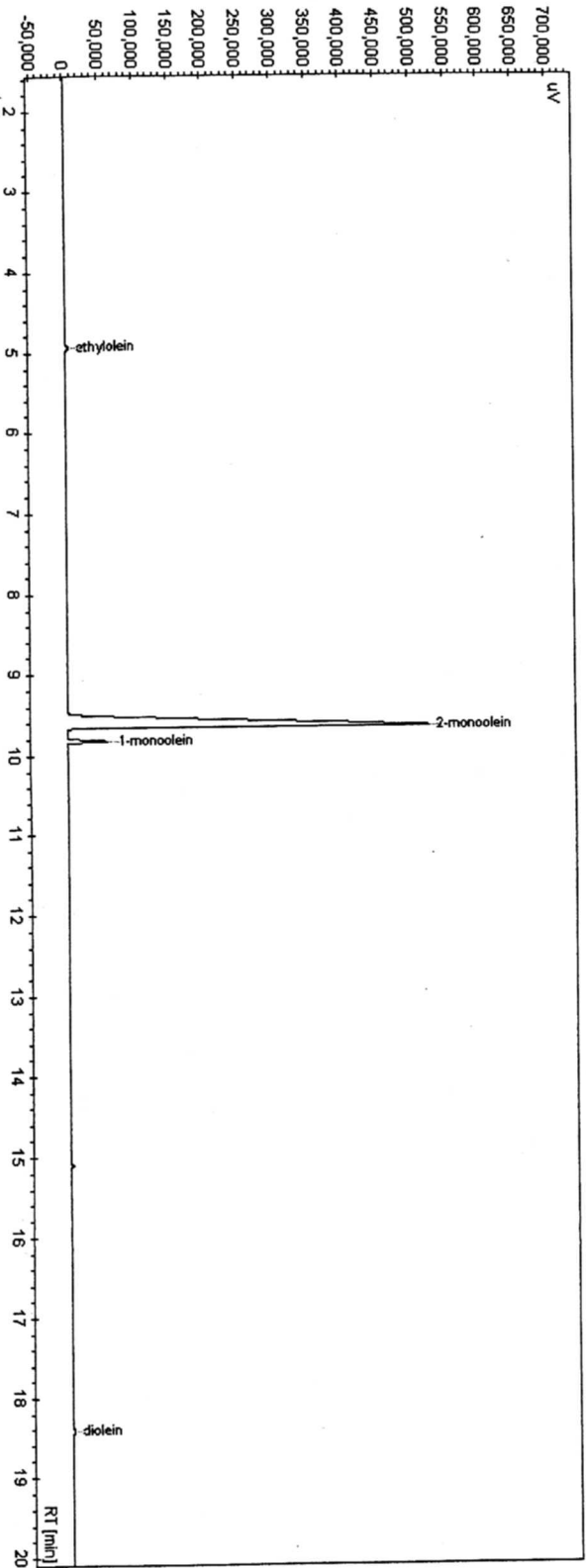
Phone: (908) 359-6778 • FAX: (908) 359-1179

website: www.indofinechemical.com

e-mail: chemical@indofinechemical.com

31-1812 2-Monoolein (95-99%)

Lot no: K 271:8



Name	Time [Min]	Height [uV]	Area [uV.Min]	Area %
ethylolein	4.92	613815	312.3	0.65%
2-monoolein	9.65	523558.1	46183.4	95.51%
1-monoolein	9.82	57293.4	1765	3.65%
diolein	18.41	2281.5	95	0.20%